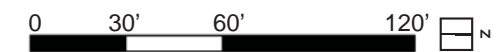


*The plan and imagery shown is conceptual and may change with final design provided that the use of the space, character, and quality of the features and plantings remain in substantial conformance with that shown.

*All elements located within the public right-of-way such as, but not limited to, crosswalks, bike racks, Capital Bike Share stations, green infrastructure features, and bike lanes may change in response to future input and coordination with the District Department of Transportation and other government agencies.



1200 THIRD STREET, NE

PUD SUBMISSION

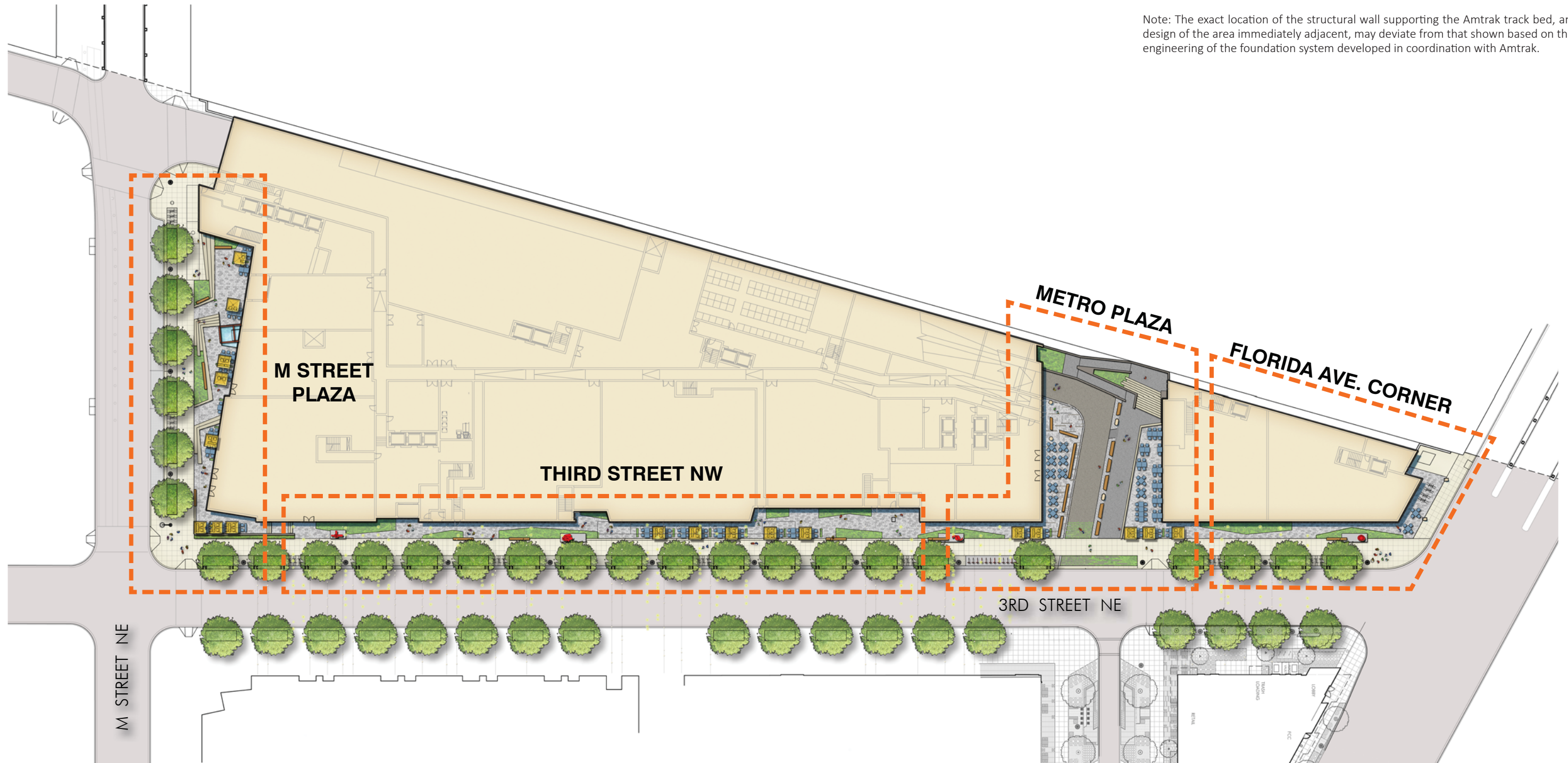
PARKERRODRIGUEZ, INC.
 Planning | Urban Design | Landscape Architecture

WASHINGTON, D.C.

October 14, 2016 sba project #45128 ©2016 Shalom Baranes Associates P.C.

ZONING COMMISSION
 Site of Plan 5.01
 CASE NO.16-09
 EXHIBIT NO.22C3

Note: The exact location of the structural wall supporting the Amtrak track bed, and the design of the area immediately adjacent, may deviate from that shown based on the final engineering of the foundation system developed in coordination with Amtrak.

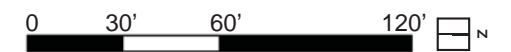


*The plan and imagery shown is conceptual and may change with final design provided that the use of the space, character, and quality of the features and plantings remain in substantial conformance with that shown.

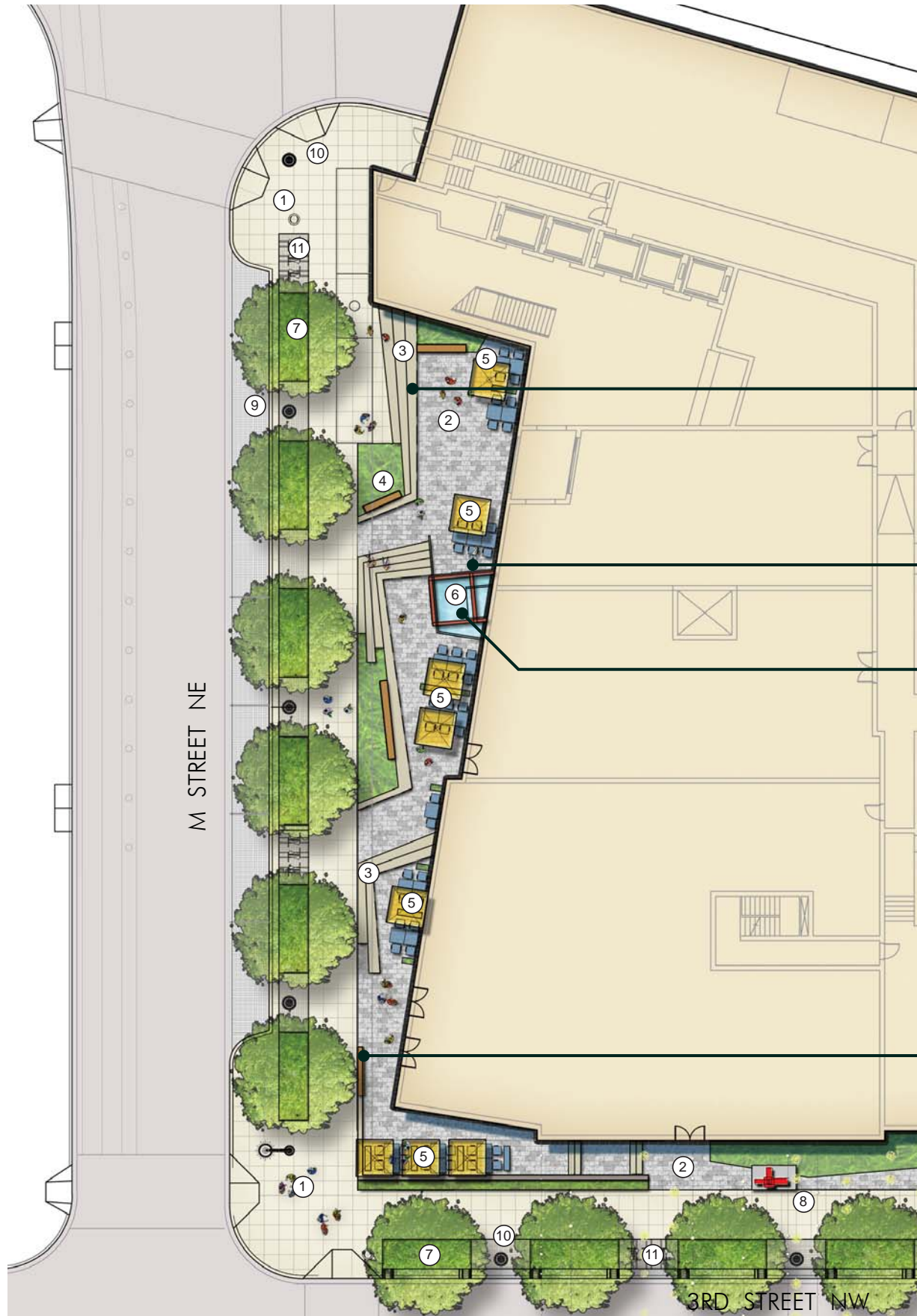
*All elements located within the public right-of-way such as, but not limited to, crosswalks, bike racks, Capital Bike Share stations, green infrastructure features, and bike lanes may change in response to future input and coordination with the District Department of Transportation and other government agencies.

1200 THIRD STREET, NE

PUD SUBMISSION

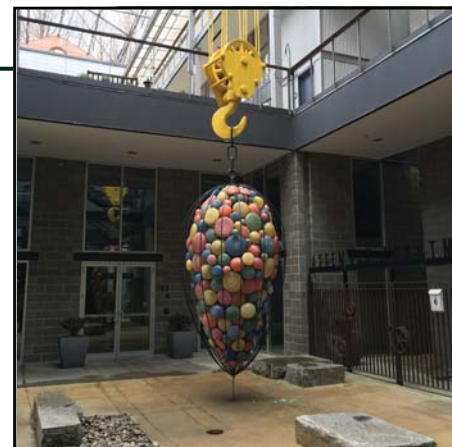


PARKERRODRIGUEZ, INC.
 Planning | Urban Design | Landscape Architecture



LEGEND

- ① SCORED CONCRETE PAVING
- ② SPECIAL PAVING
- ③ STAIRS
- ④ WOOD PLINTH/ WOOD BENCH
- ⑤ OUTDOOR SEATING
- ⑥ WATER FEATURE
- ⑦ BIORETENTION PLANTER
- ⑧ POTENTIAL SCULPTURE OR PLAYABLE/INTERACTIVE ART
- ⑨ VALET / DROP-OFF PARKING
- ⑩ STREET LIGHT
- ⑪ PERMEABLE PAVING

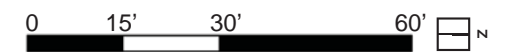


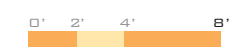
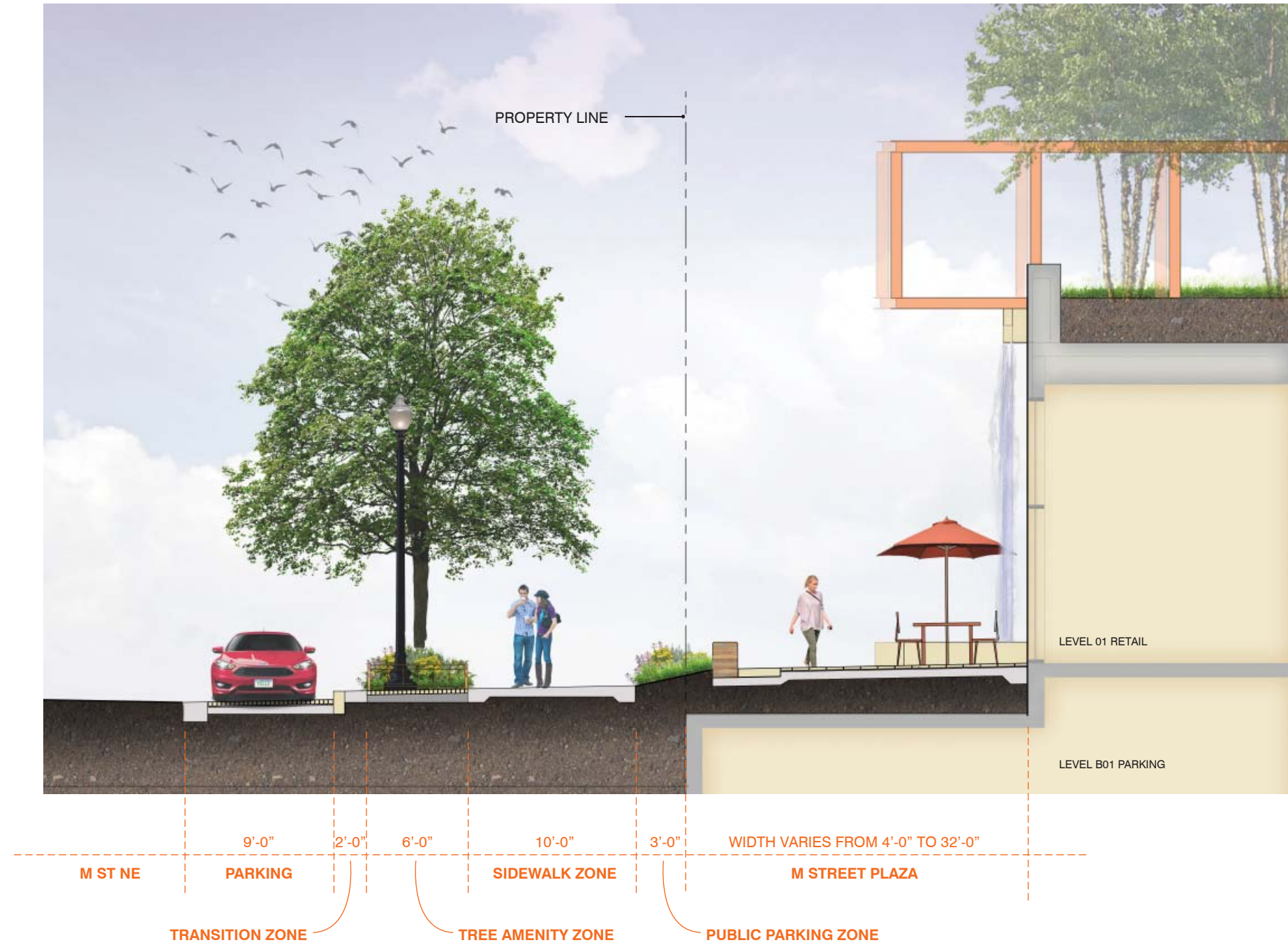
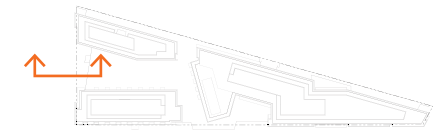
Notes:

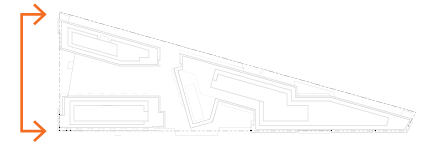
1. Flexibility is requested to vary the final selection of exterior materials within the color ranges and general material types proposed, based on availability at the time of construction without reducing the quality of materials.
2. Flexibility is requested to vary the final location of all stairs and outdoor seating areas, in order to accommodate future retail.
3. Design will incorporate principles from Gallaudet University's DeafSpace Guidelines.
4. Images are provided to help illustrate design concepts, elements, and character and do not reflect the final design of the landscape components.

*The plan and imagery shown is conceptual and may change with final design provided that the use of the space, character, and quality of the features and plantings remain in substantial conformance with that shown

*All elements located within the public right-of-way such as, but not limited to crosswalks, bike racks, Capital Bike Share stations, green infrastructure features, and bike lanes may change in response to future input and coordination with the District Department of Transportation and other government agencies.







1200 THIRD STREET, NE

PUD SUBMISSION

PARKERRODRIGUEZ, INC.
Planning | Urban Design | Landscape Architecture

WASHINGTON, D.C.

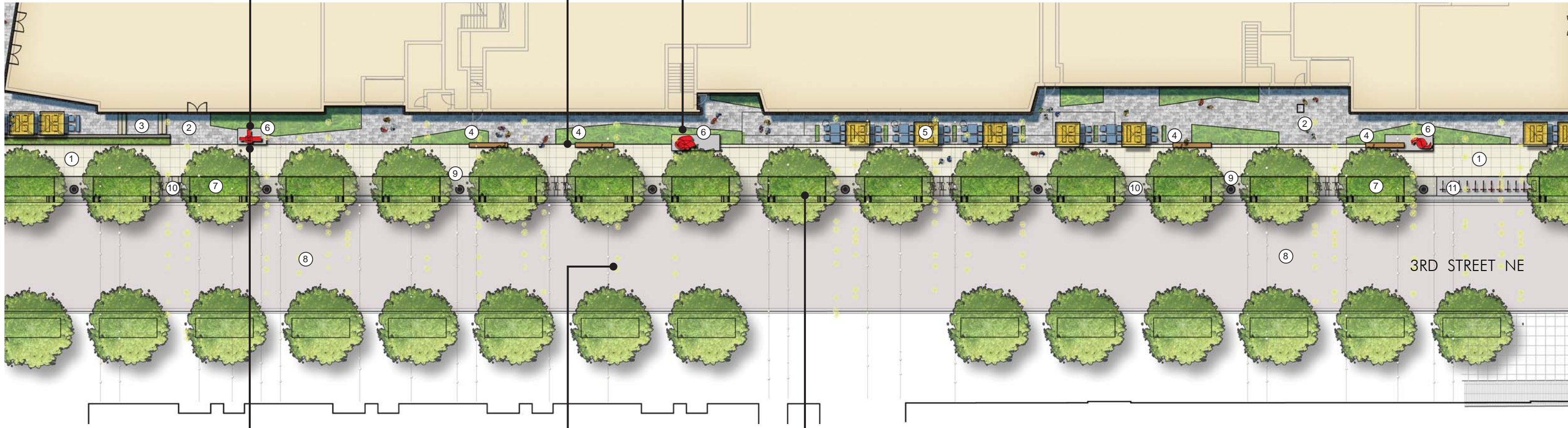
October 14, 2016 sba project #45128 ©2016 Shalom Baranes Associates P.C.

Landscape - M Street Plaza Longitudinal Section 5.05



LEGEND

- ① SCORED CONCRETE PAVING
- ② SPECIAL PAVING
- ③ STAIRS
- ④ WOOD PLINTH/ WOOD BENCH
- ⑤ OUTDOOR SEATING
- ⑥ POTENTIAL SCULPTURE OR PLAYABLE/INTERACTIVE ART
- ⑦ BIORETENTION PLANTER
- ⑧ POTENTIAL OVERHEAD FESTIVAL LIGHTING
- ⑨ STREET LIGHT
- ⑩ PERMEABLE PAVING
- ⑪ CAPITAL BIKE SHARE STATION

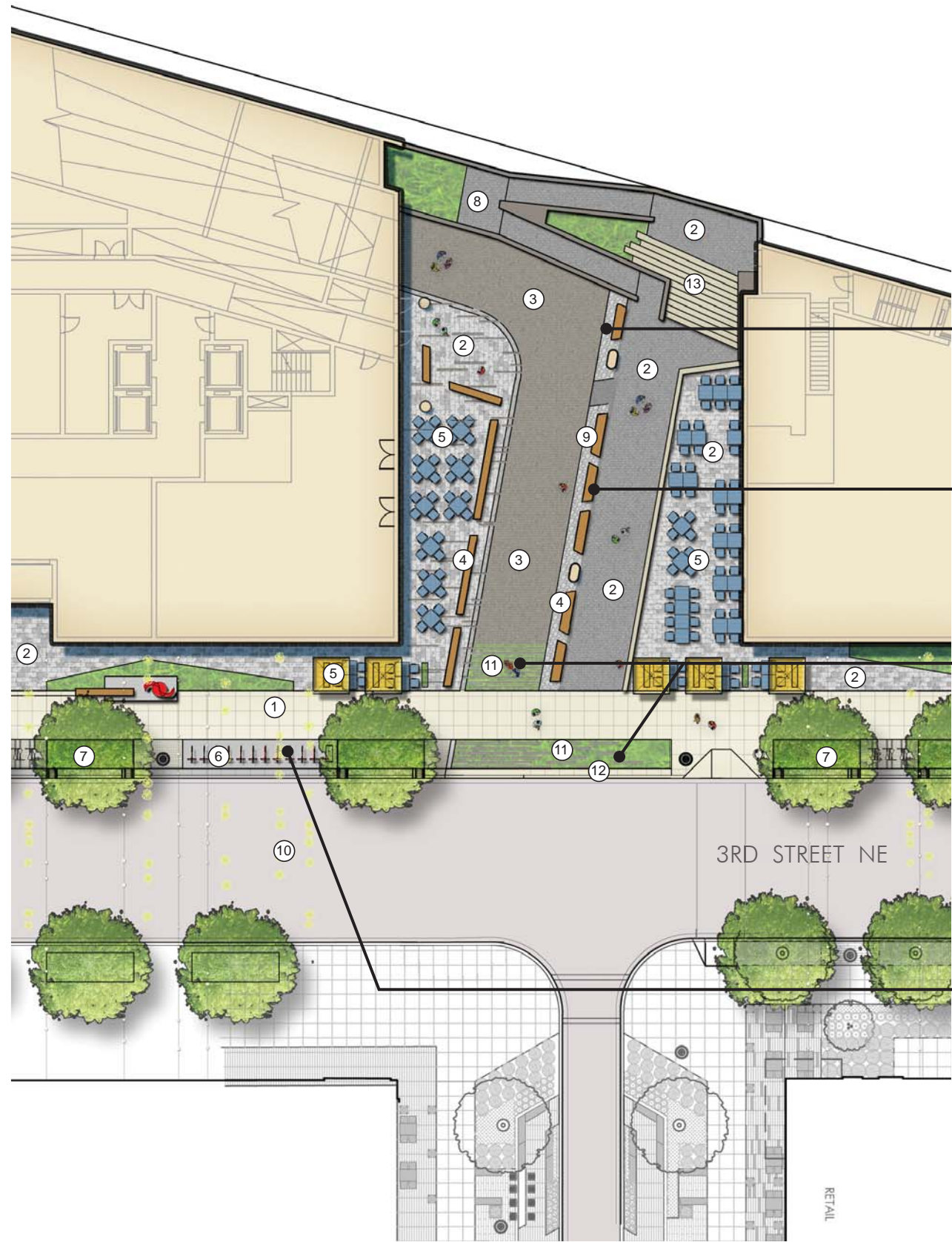


*The plan and imagery shown is conceptual and may change with final design provided that the use of the space, character, and quality of the features and plantings remain in substantial conformance with that shown.

*All elements located within the public right-of-way such as, but not limited to, crosswalks, bike racks, Capital Bike Share stations, green infrastructure features, and bike lanes may change in response to future input and coordination with the District Department of Transportation and other government agencies.

*The green space identified on this plan is shown to illustrate design intent and may be modified with final engineering and design. Final design of green space (sq. ft.) shall be within 15-30% of total tenant zone.





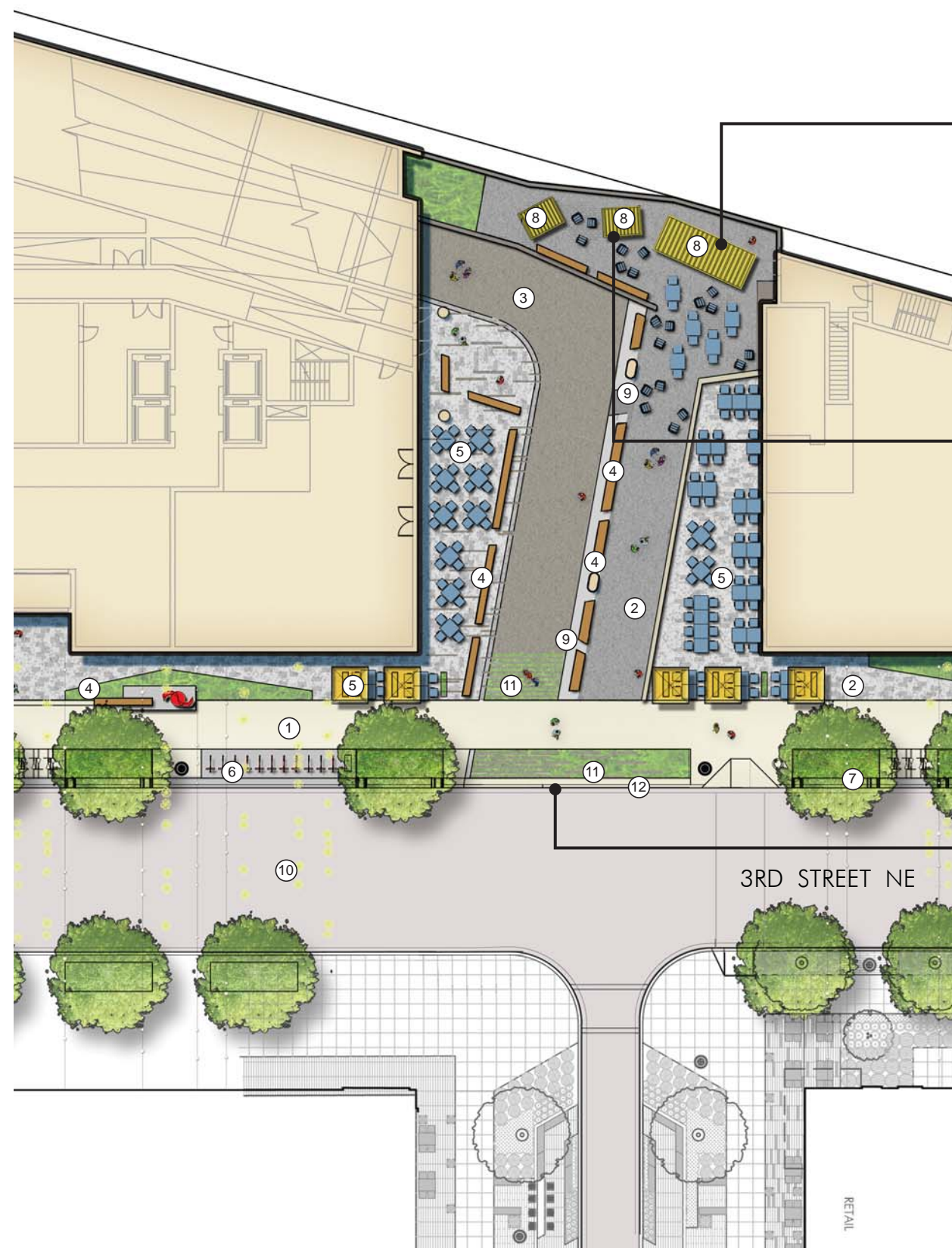
LEGEND

- ① SCORED CONCRETE PAVING
- ② SPECIAL PAVING
- ③ PRECAST CONCRETE PAVERS OR SCORED CONCRETE
- ④ WOOD PLINTH/ WOOD BENCH
- ⑤ OUTDOOR SEATING
- ⑥ CAPITAL BIKE SHARE STATION
- ⑦ BIORETENTION PLANTER
- ⑧ ADA HANDICAP RAMP (WMATA)
- ⑨ STONE MULCH
- ⑩ POTENTIAL OVERHEAD FESTIVAL LIGHTING
- ⑪ LINEAR PAVING / PLANTING BANDS
- ⑫ MOUNTABLE CURB
- ⑬ STAIRS

*The plan and imagery shown is conceptual and may change with final design provided that the use of the space, character, and quality of the features and plantings remain in substantial conformance with that shown.

*All elements located within the public right-of-way such as, but not limited to, crosswalks, bike racks, Capital Bike Share stations, green infrastructure features, and bike lanes may change in response to future input and coordination with the District Department of Transportation and other government agencies.

*The exact location of the structural wall supporting the Amtrak track bed, and the design of the area immediately adjacent, may deviate from that shown based on the final engineering of the foundation system developed in coordination with Amtrak.



LEGEND

- ① SCORED CONCRETE PAVING
- ② SPECIAL PAVING
- ③ PRECAST CONCRETE PAVER OR SCORED CONCRETE
- ④ WOOD PLINTH/ WOOD BENCH
- ⑤ OUTDOOR SEATING
- ⑥ CAPITAL BIKE SHARE STATION
- ⑦ BIORETENTION PLANTER
- ⑧ POTENTIAL KIOSK
- ⑨ STONE MULCH
- ⑩ POTENTIAL OVERHEAD FESTIVAL LIGHTING
- ⑪ LINEAR PAVING / PLANTING BANDS
- ⑫ MOUNTABLE CURB

*The plan and imagery shown is conceptual and may change with final design provided that the use of the space, character, and quality of the features and plantings remain in substantial conformance with that shown.

*All elements located within the public right-of-way such as, but not limited to, crosswalks, bike racks, Capital Bike Share stations, green infrastructure features, and bike lanes may change in response to future input and coordination with the District Department of Transportation and other government agencies.

*The exact location of the structural wall supporting the Amtrak track bed, and the design of the area immediately adjacent, may deviate from that shown based on the final engineering of the foundation system developed in coordination with Amtrak.

